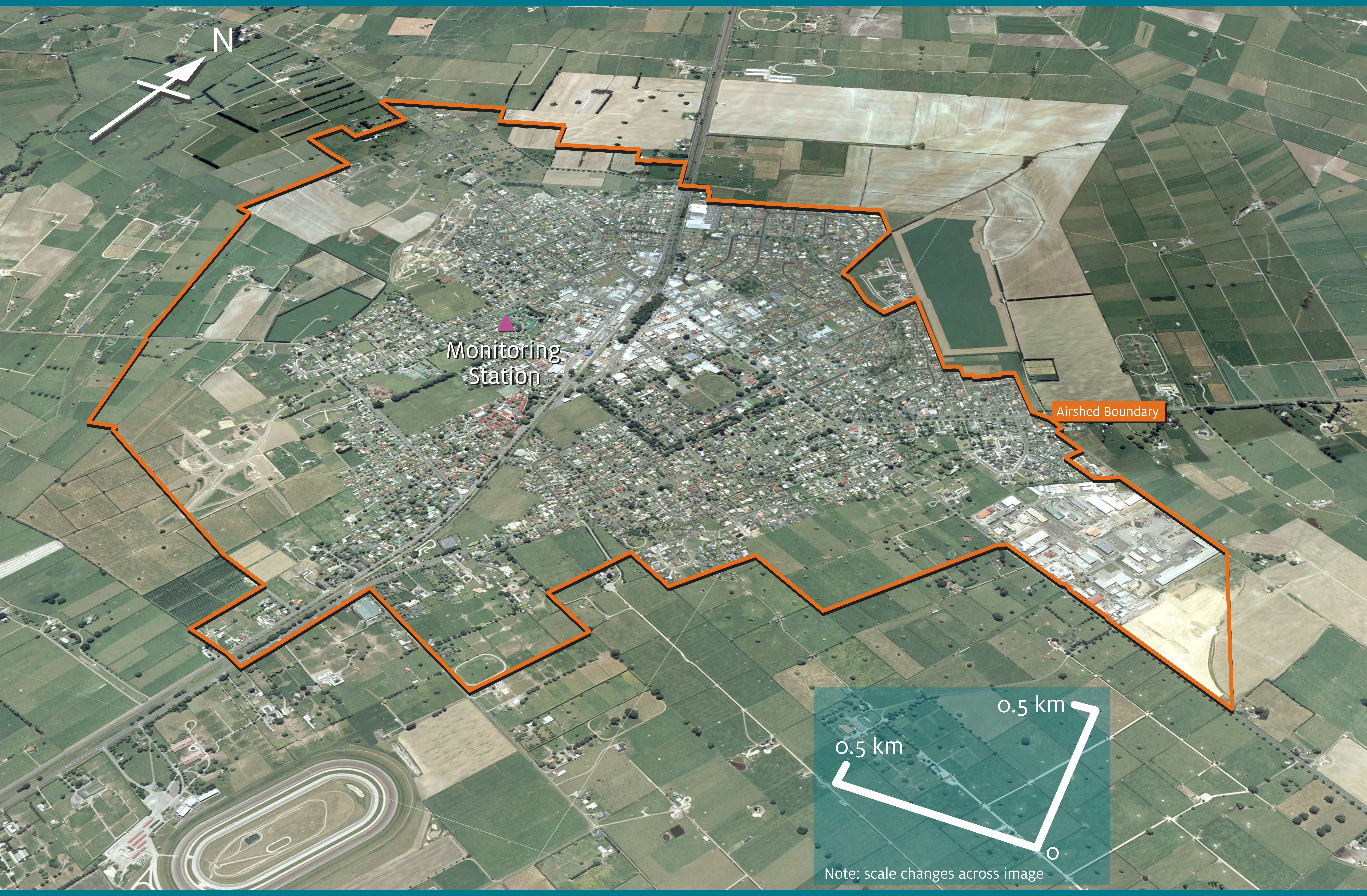


Matamata Airshed

Topographic Information derived from Land Information New Zealand's Topographic Database. CROWN COPYRIGHT RESERVED. Digital Licence No. TD093603/92.
Aerial photographic imagery sourced from Terralink International Ltd 2002. COPYRIGHT RESERVED.
DISCLAIMER: While Environment Waikato has exercised all reasonable skill and care in controlling the contents of this information, Environment Waikato accepts no liability in contract, tort or otherwise howsoever, for any loss, damage, injury or expense (whether direct, indirect or consequential) arising out of the provision of this information or its use by you.
Terrain height at 200%.
JOB 52139



Monitoring Station

Airshed Boundary



Note: scale changes across image